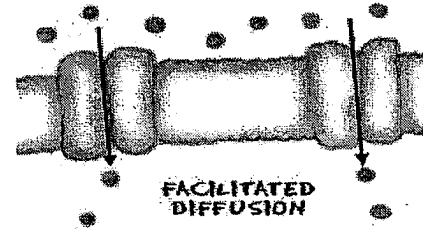
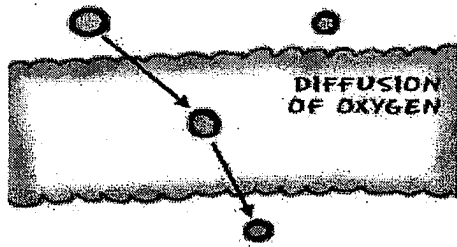


Passive Transport - Taking the Easy Road

While **active transport** requires energy and work, **passive transport** does not. There are several different types of this easy movement of molecules. It could be as simple as molecules moving freely such as **osmosis** or **diffusion**. You may also see proteins in the **cell membrane** that act as **channels** to help the movement along. And of course there is an in-between transport process where very small molecules are able to cross a **semi-permeable membrane**.



Sometimes, proteins are used to help move molecules more quickly. It is a process called **facilitated diffusion**. It could be as simple as bringing in a glucose molecule. Since the cell membrane will not allow glucose to cross by diffusion, helpers are needed. The cell might notice outside fluids rushing by with free glucose molecules.



The **membrane proteins** then grab one molecule and shift their position to bring the molecule into the cell. That's an easy situation of passive transport because the glucose is moving from higher to lower concentration. It's moving down a **concentration gradient**. If you needed to remove glucose, the cell would require energy.

Letting Concentration Do the Work

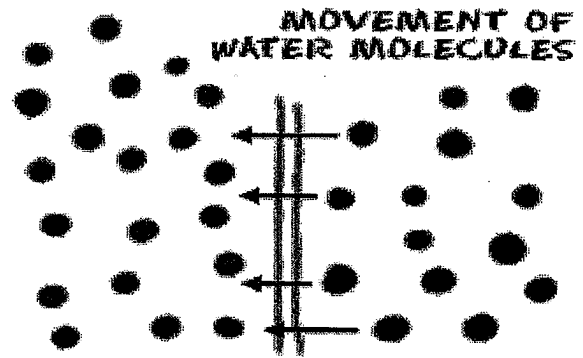
Sometimes cells are in an area where there is a large **concentration** difference. For example, oxygen molecule concentrations could be very high outside of the cell and very low inside. Those oxygen molecules are so small that they are able to cross the **lipid bilayer** and enter the cell. There is no energy needed for this process. In this case, it's good for the cell because cells need oxygen to survive. It can also happen with other molecules that can kill a cell.

Osmosis

Another big example of passive transport is osmosis. This is a **water specific** process. Usually, cells are in an environment where there is one concentration of ions outside and one inside. Because concentrations like to be the

same, the cell can pump ions in and out to stay alive. Osmosis is the movement of water across the membrane.

For a cell to survive, ion concentrations need to be the same on both sides of the cell membrane. If the cell does not pump out all of its extra ions to even out the concentrations, the water is going to move in. This can be very bad. The cell can swell up and explode. The classic example of this type of swelling happens when red blood cells are placed in water. The water rushes in to the cells, they expand and eventually rupture (POP!).

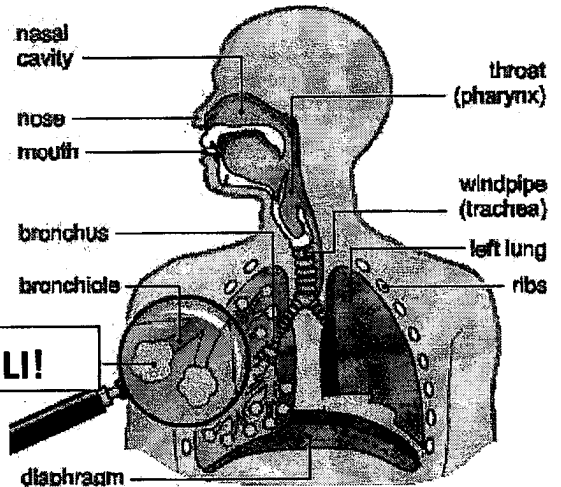


Name _____

Per. _____

Instructions: Use your reading on passive transport and the information in the boxes to answer the questions below.

Your lungs are made up of clumps of a thin tissue called alveoli. This is the site of gas exchange where oxygen enters the body (breathing in) and carbon dioxide exits (breathing out).



1. From your reading on passive transport and your knowledge of diffusion, explain how oxygen and carbon dioxide are exchanged between the cells in your lungs and your blood cells. Write at least 3 complete sentences to explain your thoughts.

